

## INVESTIGATION REPORT – Team 2



Investigation Site	Manchester Place
Investigation Date	11 <sup>th</sup> April 2008
Report By	Bill King
Team Members	Steph, Tracey (DYPC Staff Member), Bill

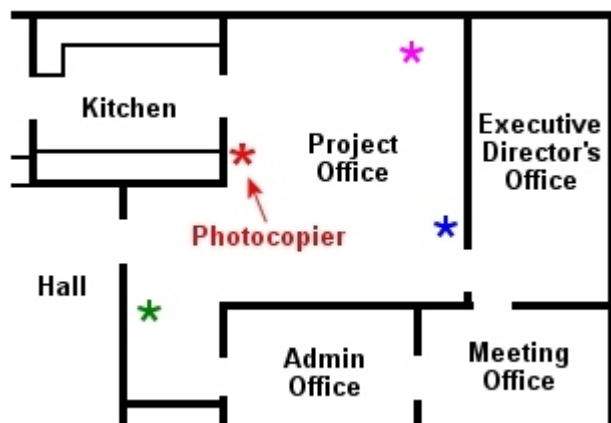
For this investigation Team 2 was joined by LuBYA (Luton and Bedfordshire Youth Association) Project Manager Tracey.

### Pre-Vigils

Steph set up two trigger object experiments.

- Two pound coin, two pence piece and a twenty pence piece on Mark's desk in the Project Office marked by the \* on the drawing below.
- One pound coin, two pence piece and a twenty pence piece on the shelf in front of the ladies toilets in the main hall marked by the \* on the drawing on the next page.

Just before we started the vigils Mark told Bill that at 19:00 that evening he had been setting up for the investigation and was sitting at his desk when he thought someone went past. He feels as if they had entered through the door from the Executive Director's Office and were heading across the room to the Admin Office. He thought it was Tracey, but it wasn't.



A similar occurrence had happened during the week when he was at his desk. He thinks they are too central in the room to be heading for the doors on the opposite side of the room but were heading in the direction of the photocopier which stands between the doors to the Hall and the Kitchen as shown on the plan on the left.

Before the investigation started Bill installed a remote night-vision camera on top of a cabinet close to the door to the Executive Director's Office as marked by the \* on the drawing on the left. This camera was placed so it faced towards the area

where the darts had been found embedded in the wall (above the photocopier). It also covered the area between the doors to the Hall and Executive Director's Office where shadows had been seen. The kitchen was used as the monitoring point for this camera which was set to record whenever motion was detected, during the whole event. Bill had also set a video camera to monitor the centre of the room from a different direction the position of which is marked by the \*. This camera was only used for a single 1.5 hour recording during the vigils.

### Meditation: DYPC Hall – 21:07 to 21:17

For the meditation we all sat in a circle of chairs in the middle of the Hall in the Dunstable Young People's Centre (DYPC). A quick explanation of why we meditate was given to Tracey and Mark of LuBYA then we undertook a ten minute meditation in the dark.

After the meditation each member described anything that they had seen (visually or in their minds), heard, smelt, felt or in any way sensed. The feedback from each member is given below. The drawing

## INVESTIGATION REPORT – Team 2



**Investigation Site** Manchester Place

**Investigation Date** 11th April 2008

below shows the positions occupied by each team member during the mediation. The \* is Andy's video camera and the \* Steph's.

**Steph:** Steph gets an impression of a large house and gardens. The house is higher than the gardens and she is standing on a small flight of steps leading down to the large gardens. It has many small neatly kept flowerbeds, grass walkways in between and small stone walls separating parts of the garden. In addition she had heard a weird noise from behind her like a 'wooooo', long and high pitched coming from the south in the direction of the doors to the two store rooms as shown on the plan on the right

Steph sees the word 'Red' a few times in her mind.

At the end of the meditation, Mark is talking about what he picked up and Steph observes a small white light flash to the bottom left of her camcorder.

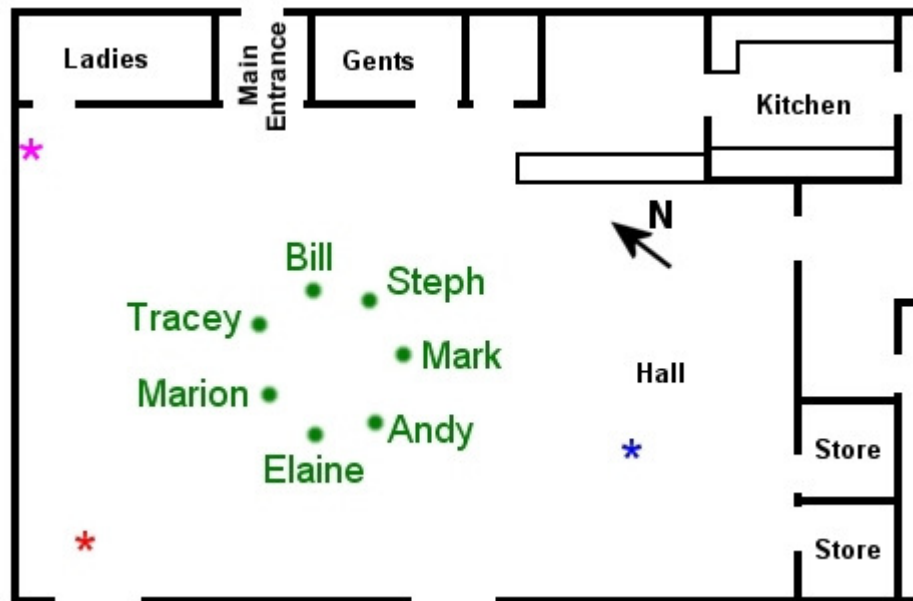
**Mark:** The only thing he was aware of during the time we were meditating was the ticking of the clock, which is not a bad thing to focus on when meditating, especially for the first time.

**Andy:** Just before the end of the meditation Andy reports hearing a 'tap' coming from the kitchen.

**Elaine:** Sensed children from Victorian times playing with a hoop and stick. She said she felt a cold breeze on her left-hand side as if someone was there. At the end of the vigil she felt a poke in her back. She also said that she kept seeing someone walk past the locked door just below the kitchen as shown on the drawing above. The figure was seen through the glass panel in the top half of the door.

**Marion:** Saw a pinpoint of light to the right of the door to the Project Office (the door in the wall below the kitchen on the drawing above, where Elaine saw the figure). This door was locked during the later vigils as it would not stay shut and creaked as it moved. She saw another pinpoint of light between Steph and Mark and about a metre behind them. She got the name Billy then shortly after Billyo. She commented on the clock volume level which seemed to have gone up and down but we all noticed this (it is a mechanical ticking clock and the change in the loudness of the tick is not uncommon with that type of clock). At one point she closed her eyes and as she opened them she saw an orb to the south. Towards the end of the meditation she again saw little lights by the locked door. When I started talking Marion felt a strong presence on her left side which made her jump and again shortly after. She believes the tiny lights are children.

**Tracey:** Felt drawn to Andy's camera (the \* on the drawing above). She noticed that the light around it kept getting brighter. Investigation revealed that the light was on the wall behind the camera and was being projected from the eyepiece of the camera.



## INVESTIGATION REPORT – Team 2



**Investigation Site** Manchester Place

**Investigation Date** 11th April 2008

**Bill:** During the meditation Bill heard numerous natural clicks from the building but one, behind Elaine, sounded like a step.

During the note taking, at the end of the meditation, Steph and Bill saw a large patch of light high up on the wall to the left of the back door (in the northwest corner of the room by Steph's camera).

### **Séance: DYPC Hall – 21:27 to 21:55**

The positions for the séance were the same as those adopted for the meditation with the exception of Bill who chose to stand and walk around, looking at people's auras, so he removed his chair and the rest of the team, moved round to close the space.

#### **Bill's Notes**

21:27 Bill noted that at the start Marion's aura was very bright and Tracey's, sitting next to her, fairly bright, everyone else's was fairly dim. He also saw a shadow as if someone else was sitting on Marion's left between her and Tracey.

21:30 Steph picked up on the letter K.

21:31 Bill gets cold shivers whilst standing two metres back between Steph and Tracey (to the left of the entrance door). This continued for quite a while with no discernible draught.

21:33 A light patch on the back of Tracey's chair is seen by Bill.

21:34 Bill sees a strong glow on Mark's head. He thought it may have been caused by Mark briefly turning towards him so he asked Mark to face him but his face appeared considerably dimmer than the glow Bill had seen. Mark told him that he had suddenly developed a pounding headache.

Bill moved back to the area where he had cold shivers (three metres to the north of the group) and felt really cold with major shivers. This only occurred in one very localised area.

21:41 A very bright aura around just Mark especially his chest and lower throat is seen by Bill.

21:42 Bill can smell ironing, like someone ironing clothes on an ironing board.

Marion gets the name George Smith.

21:45 A glow is noticed by Bill on Marion's right and a flashing light on Elaine's upper left arm (which is the nearest one to Marion).

21:47 Bill no longer feels cold anywhere around the group.

21:53 Temperature is measured at +13°C around the circle.

#### **Steph's Notes**

During the séance Steph picks up the initial 'K' and a young man in his late teens or early twenties. She feels distinctly colder on her left and her neck and shoulders feel very stiff.

Mark feels a pain shooting up his right arm from his hand to his shoulder.

During the séance Steph experiences a brief unpleasant smell. Mark also smelt this and described it as sewage. Steph agreed that it smelt like sewage or rotting rubbish.

## INVESTIGATION REPORT – Team 2



**Investigation Site** Manchester Place

**Investigation Date** 11th April 2008

At one point Steph asks out for a presence to make itself known and make a noise or move one of the chairs. There were two clicks or creaks coming from the chairs behind Elaine following her asking.

After the séance Steph observed a shadow move behind Elaine to her left. Mark reported that he was drawn to the area behind him during the séance and had an uncomfortable feeling.

### Vigil 1: DYPC Hall – 22:25 to 23:10

Temperature 17°C measured by Steph.

22:32 Steph sees a small white flash of light under the chair situated next to the door in to the Project Office.

22:34 Temperature +13.5 to +14°C measured by Bill.

This is slightly warmer than during the séance.

22:35 Steph hears faint whistling which appears to be coming from the direction of her camcorder. Possibly from outside?

22:36 Steph picks up the name 'Ben/Benjamin'.

22:38 Heating heard to come on.

22:39 Steph hears two clicks in the corner to her right.

22:40 Temperature +12.5 to +13°C measured by Bill.

22:42 Bill sees a bright light at the base of the wall to the south between the store room door and the door to the Project Office.

22:43 Steph hears a short whistle/squeak from the LPS base area next to the kitchen.

Steph gets an impression of a young boy around 5 or 6 years old. He has straight blonde hair a white shirt and brown trousers made of a rough looking material. He looks clean and smart. Picks up the name 'Tommy' with him.

22:45 Tommy appears to be sad. Steph feels that it is something to do with being left out or left alone. Steph can see him standing outside the building against the wall where the wall curves (opposite the main entrance) during the day.

22:50 A bright patch is seen by Bill on the door to the right of the Gents.

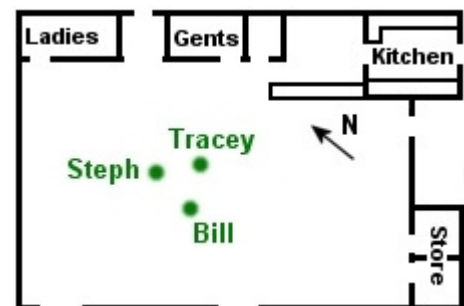
22:57 A speck of light on the right side of the radiator on the wall to the left of the entrance is noticed by Bill.

22:58 Bill observes a small dark shape which appeared from behind the left-hand end of the counter close to the floor (the counter is shown on the drawing above and lies to the left of the kitchen and above the compass arrow). It was smaller than a cat, about the size of a large rat.

23:00 +13°C measured on the floor by Bill around the team and about three metres away.

23:02 Bill sees a large blue/white patch on the top left of the door to the Project Office.

23:05 A bright red patch about half a metre across is seen by Bill in front of the main entrance doors to the hall.



# INVESTIGATION REPORT – Team 2



**Investigation Site** Manchester Place

**Investigation Date** 11th April 2008

Steph hears what sounds like a 'blip' sound to her right. This is described as sounding technical like a piece of equipment. Steph's camcorder is to the right of the team but Steph has never heard it make this noise before and it only happens a few times in 2 minutes.

During the vigil the heating had come on for about ten minutes and had then gone off again. Mark said that the thermostat, which is placed above the right-hand Store door, is set for +12.5°C yet the heating did not come on during the séance when the room was measured as being 1°C cooler than it was measured during the vigil. This could be because the thermostat is high up near the roof and at the opposite end of the room but this could not account for the heat going off again as the only radiators which heated up were at the other end of the room (around the meditation, séance and vigil area). For the thermostat to heat up would have required the vigil area to have become quite warm (due to the proximity of the only working radiators) but this was not the case as the vigil area temperature hardly varied.

## Vigil 2: DYPC Project Office – 23:42 to 00:27

23:42 Temperature 19°C measured by Steph.

23:43 We all heard a noise. Tracey thought it was a walkie-talkie but it couldn't have been as the noise from them is very loud and distinctive. Both Tracey and Steph decided it sounded electrical with Steph thinking it was a rustling static sound as if coming from her right. To Bill it sounded more like a snuffling noise with a squeak coming from his right.

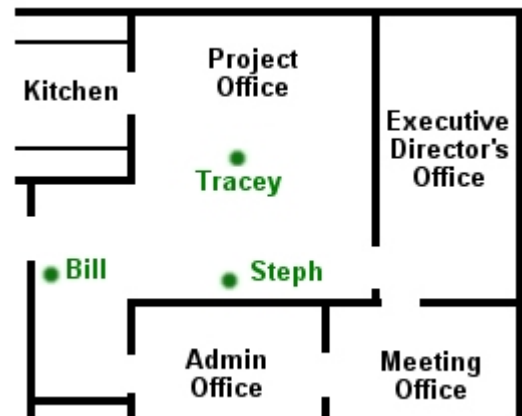
23:45 The heating comes on again.

23:48 Temperature +14.5 to +15°C measured by Bill.

23:52 Heat goes off.

23:55 Steph hears a noise like something being moved/someone moving about to her above right and which appears to be coming from above between the Project Office and the Executive Directors Office. These are heard as if there was someone in a room above. After these noises she hears a woman's voice.

Bill hears talking coming from the hall though Steph thought it came from outside (the outer walls are at the top and right of the drawing above). To Bill it sounded like Andy who was in the hall at the time but he would have to have been talking very loudly as he and Mark were at the opposite end of the hall.



23:56 The faint sound of walking and the sound of female voices is heard by Bill coming from the Admin Office (Team 3?).

23:58 Steph gets an impression of a man walking past her from right to left. He is walking briskly as it is dark and raining. He has a long black cape on which comes down to his knees. He is walking outside down a small alleyway or very narrow road.

00:03 Bill heard a phone ring ('brrring, brrring', like the older style phones). There was just the one pair of sounds and they were faint. All the phones in the building are near to where we were and are quite loud.

## INVESTIGATION REPORT – Team 2



**Investigation Site**      Manchester Place

**Investigation Date**      11th April 2008

00:06    Temperature 18°C measured by Steph.

00:10    Temperature +14 to +14.5°C measured by Bill.

00:16    Bill hears a clock ticking very loud. This is the first time he had noticed it.  
           Steph hears a sound like a switch being flipped.

00:24    Steph sees a pale white oval shape move from left to right along the radiator opposite her. It is a few feet off the floor and only about a foot in length.

00:25    Steph sees another pale light about the size of a small football move along the floor under the same radiator going from left to right.

During the vigil Bill heard what sounded like someone undoing the plastic wrapper on a video cassette coming from the hall. It wasn't until later that he remembered Andy uses CDs in his camcorder (so no plastic wrap) and Mark had not got a camera with him. When Bill asked Mark he said no one had made such a noise.

### Vigil 3: Pioneer's Hall – 01:00 to 01:45

01:02    Temperature +9.5°C measured by Bill.

01:05    Steph can see a faint glowing light through the window of the storeroom opposite her (next to the disabled toilet). It appears to be very faint but looking either side of the light it becomes very bright and flickers, almost like a star.

01:07    Bill sees a streak of light moving right to left across Andy.

01:11    Steph hears the door to the gym behind Andy and Mark rattle.

01:12    A blob of light is noticed by Bill drifting downwards below the level of the curtain on the window to his left.

01:15    Steph gets the impression of a small child bouncing a hard rubber ball. The ball is a brownish/red colour.

01:16    Steph sees a small flash of white light a few feet in front of her.

01:22    Steph's right foot suddenly becomes freezing cold.

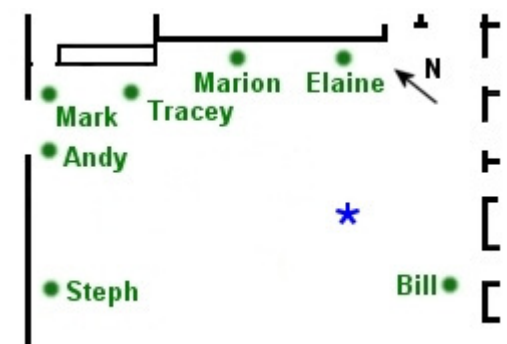
01:24    Steph sees several spots of tiny white lights 'sparkle' by the main entrance.

01:28    Steph hears what sounds like a voice coming from the direction of the kitchen. She can't make out what is said.

01:30    An obtuse angled triangular patch of white light is seen on the floor near the trigger object table by Bill. The table position is marked by the \* on the drawing on the right and the light was positioned just down and to the left of the table as shown.

01:33    Temperature +8.5 to +9°C measured by Bill.

01:35    Bill notices a large patch of light which seems to be rolling along the floor between Andy and Steph.



## INVESTIGATION REPORT – Team 2



**Investigation Site** Manchester Place

**Investigation Date** 11th April 2008

01:40 A patch of light is seen by Bill to the left of Steph.

Steph sees a spot of pink light on the wall above the chairs between Tracey and Marion.

01:44 Bill sees a brief pinprick flash of light above Andy.

### **Vigil 4: DYPC Admin Office – 02:25 to 03:10**

02:32 Temperature +13.5°C as measured by Bill.

02:36 Bill hears a very faint/distant voice.

02:39 A moving, dark patch about 30cm across and one metre to the left of Tracey is observed by Bill.

Steph looks over at Bill and can see someone sitting there who is not Bill. He has a hat on and is writing something on a large white notebook. He is holding the notebook up to his right

02:40 Bill hears a male voice and a female voice which sounded like they were just outside the Executive Director's Office (in the access path at the side of the building, next to Tracey's car).

02:43 Steph feels a sudden sensation of cold on her chin and right cheek

02:45 Bill sees a shadow go across the door frame and wall to the left of the door to the Meeting Room and about one metre above the floor.

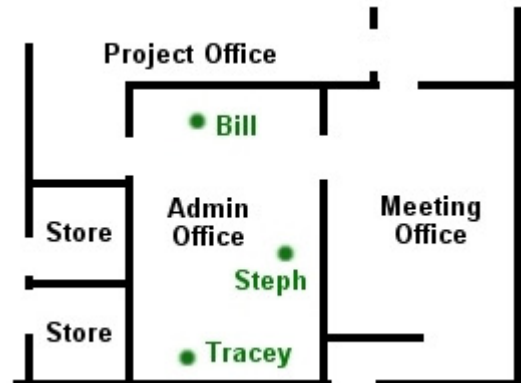
02:50 A moving patch of light is noticed by Bill on the bottom of the meeting room door.

02:55 A scintillating light is seen by Bill on the top hinge area of the Meeting Room door.

03:00 Bill sees a red patch of light below the window 1.5 metres to the left of Tracey (below the centre of the window).

03:07 Bill feels a draught on his right-hand side

Temperature +13°C all around except to Bill's right where it is +13.5°C (measured by Bill).



### **General Notes**

23:40 The two pence piece coin in the Project Office has moved

00:30 All three coins left in the hall have moved. They all appear to have moved backwards towards the wall.

Talking to members after the séance, it appears that Steph Andy and Elaine all experienced cold sensations to their left.

# INVESTIGATION REPORT – Team 2

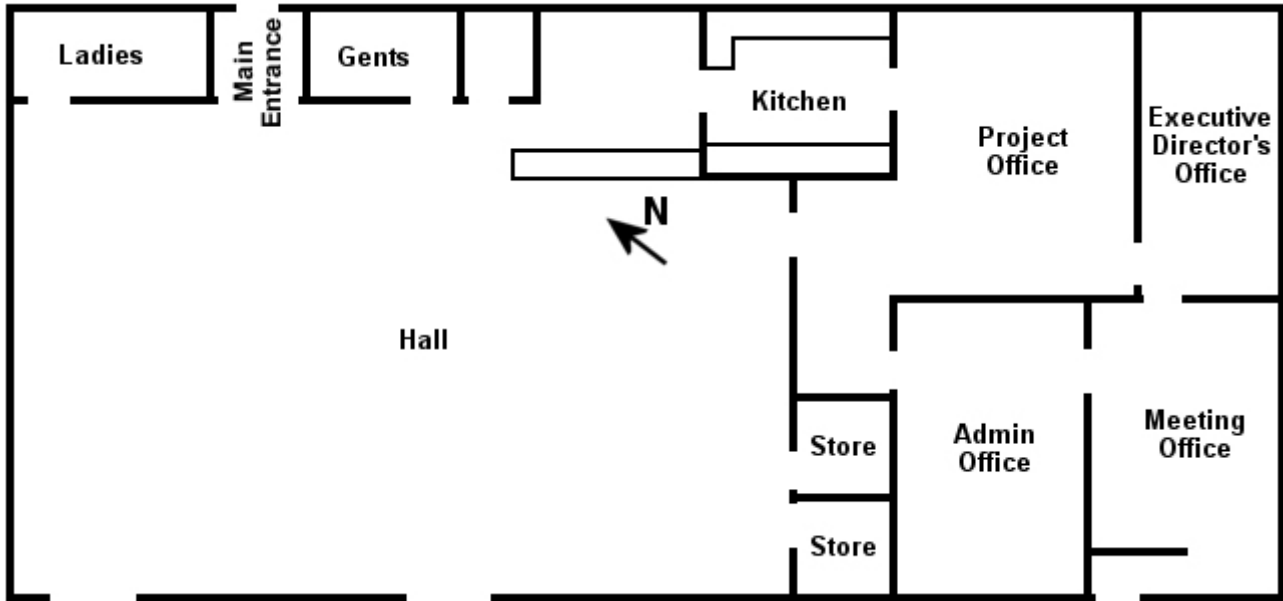


Investigation Site Manchester Place

Investigation Date 11th April 2008

## Building Plans

### DYPC



### Pioneers

